

ISUZU

ELF

Smoother



SAFETY PLUS

- SRS AIRBAG**
- ASR**
ANTI-SLIP REGULATOR
- ABS**
ANTI-LOCK BRAKING SYSTEM
- EBD**
ELECTRONIC BRAKE FORCE DISTRIBUTION
- IMMOBILIZER**

4 WHEELER
GVW 5,100kg

6 WHEELER
GVW 7,500kg

**NMR
125**

**NPR
PRO**

**NPR
155**

5
YEARS WARRANTY
OR
300,000 km
WHICHEVER COMES FIRST

EURO 4

B20
DIESEL COMPATIBLE

FREE SERVICE CAMPAIGN
ISUZU

Product image for illustration purposes only. Actual product may vary.

SPECIFICATIONS

MODEL CODE	NMR125		NPR PRO		NPR155	
	NMR85UEHN	NMR85UHHN	NPR85UHLN	NPR75UHLN	NPR75UKLN	
Drive Train	4-Wheeler		4x2		6-Wheeler	
ENGINE	4JJ1-TCC		4HK1-TCN		4HK1-TCN	
Model	4JJ1-TCC		4HK1-TCN		4HK1-TCN	
Type	DOHC, VGS Turbo with Intercooler		4-Cylinder InLine, 4 Cycle, Water-Cooled		OHC, VGS Turbo with Intercooler	
Displacement	cc		2,999		5,193	
Maximum Output (Gross)	kW (PS) @ rpm		91 (125) @ 2,600		114 (155) @ 2,600	
Maximum Torque	Nm (kgfm) @ rpm		354 @ 1,500		419 @ 1,600	
Emission Level			Euro 4		Euro 4	
Fuel System			Commonrail Direct Injection		Commonrail Direct Injection	
TRANSMISSION			MY7-6S		MY7-6S	
Model / No. of Speed			Automated MT 6-Speed		Automated MT 6-Speed	
Gear Ratio			5.979		5.979	
			3.434		3.434	
			1.862		1.862	
			1.297		1.297	
			1.000		1.000	
			0.759		0.759	
			5.701		5.701	
			5.571		5.571	
	4.556				4.556	
WEIGHT & CAPACITIES						
Gross Vehicle Weight	kg		5,100		7,500	
Curb Weight	kg		2,070		2,555	
Front	kg		1,480		1,705	
Rear	kg		590		865	
Fuel Tank Capacity	l		75		100	
AXLE						
Front	Type		Reverse Elliot, I-Beam		Reverse Elliot, I-Beam	
Front Axle Capacity (Design)	kg		2,900		3,100	
Rear	Type		Banjo, Full Floating		Banjo, Full Floating	
Rear Axle Capacity (Design)	kg		4,600		6,600	
SUSPENSION SYSTEM						
Suspension	Front		Semi Elliptical Alloy Steel Leaf Spring with Double Acting Telescopic Shock Absorber, Stabiliser Bar		Semi Elliptical Alloy Steel Leaf Spring with Double Acting Telescopic Shock Absorber	
	Rear		Semi Elliptical Alloy Steel Leaf Spring with Double Acting Telescopic Shock Absorber		Semi Elliptical Alloy Steel Leaf Spring with Double Acting Telescopic Shock Absorber	
TYRES & WHEELS						
Tyres			205 / 75R17.5		215 / 75R17.5	
Wheels			17.5 x 5.25-115		17.5 x 6.00-127	
BRAKES						
Service	Type		Hydraulic System with Auto Adjusting Front and Rear Drum Brakes		Hydraulic System with Auto Adjusting Front and Rear Drum Brakes	
			Dual Circuit, Vacuum Assistance and Anti-Lock Brake System (ABS) with Electronic Brake Force Distribution (EBD)		Dual Circuit, Vacuum Assistance and Anti-Lock Brake System (ABS) with Electronic Brake Force Distribution (EBD)	
Parking Brake Type			Transmission Mounted, Mechanical Operated Internal Expanding		Transmission Mounted, Mechanical Operated Internal Expanding	
Auxiliary			Exhaust Brake		Exhaust Brake	
STEERING						
Steering System			Power Assist, Recirculating Ball Type		Power Assist, Recirculating Ball Type	
Min. Turning Radius	m		5.6		7.2	
ELECTRICAL						
Battery			80D26L x 2		80D26L x 2	
Alternator			24V-90A		24V-90A	
OTHER SAFETY						
Safety			Supplemental Restraint System (SRS) with Pre-Tensioner Seatbelt		Supplemental Restraint System (SRS) with Pre-Tensioner Seatbelt	
			Anti-Slip Regulator (ASR) with On/Off Function		Anti-Slip Regulator (ASR) with On/Off Function	
			Cab Tilt Warning		Cab Tilt Warning	
			Central Locking with Remote Keyless Entry & Immobiliser		Central Locking with Remote Keyless Entry & Immobiliser	
Security						
DIMENSION						
Overall Length	mm		4,730		6,635	
Overall Width	mm		1,815		2,115	
Overall Height	mm		2,193		2,254	
Wheelbase	mm		2,475		3,815	
Front Overhang	mm				1,110	
Rear Overhang	mm		1,145		1,710	
Front Tread	mm		1,475		1,680	
Rear Tread	mm		1,445		1,650	
Cab to Axle Center	mm		2,022		3,242	



ISUZU MALAYSIA SDN BHD 200401026438 (664946-H)

501D, LEVEL 5, TOWER D, UPTOWN 5, NO.5, JALAN SS21/39, DAMANSARA UPTOWN, 47400 PETALING JAYA, SELANGOR DARUL EHSAN.
GENERAL LINE: 03-7723 9777 FAX: 03-7723 9779
HOTLINE: 1-300-88-1133 www.isuzu.net.my

www.isuzu.net.my

ISUZU SERVICE CENTRE SDN BHD 201601034731 (1205672-X)

LOT 730, JALAN SG. RASAU, SECTION 16, 40200 SHAH ALAM, SELANGOR DARUL EHSAN.
PHONE: 03-5513 0518
FAX: 03-5512 7550

TESTED AND PROVEN POWERTRAIN



NMR 125 / NPR PRO

4JJ1-TCC
Displacement: 2,999cc
Max. Output (Gross): 91kW (125ps) @ 2,600rpm
Max. Torque: 354Nm @ 1,500rpm

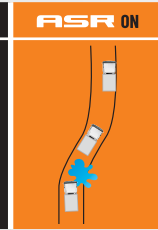
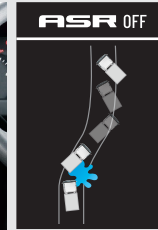


NPR 155

4HK1-TCN
Displacement: 5,193cc
Max. Output (Gross): 114kW (155ps) @ 2,600rpm
Max. Torque: 419Nm @ 1,600rpm



CLASS-LEADING SAFETY AND LONG TERM COST SAVINGS



ASR traction control helps prevent wheelspins and improves vehicle stability when driving on slippery roads.

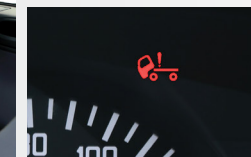
EBD is a function that uses the ABS to distribute braking force between the front and rear wheels to compensate for changes in the load conditions or any shift of load due to acceleration/deceleration, thus preventing premature locking of the rear wheels.



*SRS airbag system and seat belt with pretensioner are activated in the event of a frontal collision, mitigating impact to the head and chest.
*Applicable for driver only.



Brand New Feature - USB Port



Cabin Tilt Warning & Buzzer for driver safety warning



LED Headlight to provide better visibility

USEFUL FEATURES



2-pedal operation.



No downtime for clutch maintenance.



Gear position indicator.



New Automated Manual Transmission (AMT) makes driving easier and less stressful.



Dealer's information

ISUZU
GENUINE PARTS

ISUZU
BEST VALUE PARTS