

# ISUZU

# ELF



## SAFETY PLUS

**SRS**  
AIRBAG

**ASR**  
ANTI-SLIP REGULATOR

**ABS**  
ANTI-LOCK BRAKING SYSTEM

**EBD**  
ELECTRONIC BRAKE FORCE DISTRIBUTION

 **IMMOBILIZER**

6 WHEELER

GVW 7,500kg

GVW 8,500kg

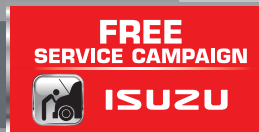
**NPR**  
**PRO**

**NPR**  
**155**

**NQR**  
**155**



**EURO 4**



Product image for illustration purposes only. Actual product may vary.

# SPECIFICATIONS

## NPR PRO

## NPR155

## NQR155

MODEL CODE		NPR85UKL	NPR75UHL	NPR75UKH	NQR75UKN
<b>Drive Train</b>		4 x 2			
<b>ENGINE</b>					
Model		4JJ1-TCC		4HK1-TCN	
Type		4-Cylinder InLine, 4 Cycle, Water-Cooled			
		DOHC, VGS Turbo with Intercooler		DOHC, VGS Turbo with Intercooler	
Displacement	cc	2,999		5,193	
Maximum Output (Gross)	kW (PS) @ rpm	91 (125) @ 2,600		114 (155) @ 2,600	
Maximum Torque	Nm (kgfm) @ rpm	354 @ 1,500		419 @ 1,600	
Emission Level		Euro 4			
Fuel System		Commonrail Direct Injection			
<b>TRANSMISSION</b>					
Model / No. of Speed		MYY-6S			
Gear Ratio		Manual 6-Speed			
	1st	5.979			
	2nd	3.434			
	3rd	1.862			
	4th	1.297			
	5th	1.000			
	6th	0.759			
	Reverse	5.701			
	Final	5.571	4.556		5.125
<b>WEIGHT &amp; CAPACITIES</b>					
Gross Vehicle Weight	kg	7,500		8,500	
Curb Weight	kg	2,530	2,615	2,620	2,835
Front	kg	1,600	1,765	1,755	1,835
Rear	kg	930	850	865	1,000
Fuel Tank Capacity	l	100			
<b>AXLE</b>					
Front	Type	Reverse Elliot, I-Beam			
Front Axle Capacity (Design)	kg	3,100		3,300	
Rear	Type	Banjo, Full Floating			
Rear Axle Capacity (Design)	kg	5,000		6,600	
<b>SUSPENSION SYSTEM</b>					
Suspension	Front	Semi Elliptical Alloy Steel Leaf Spring with			
	Rear	Double Acting Telescopic Shock Absorber			
<b>TYRES &amp; WHEELS</b>					
Tyres		215/75R17.5			
Wheels		17.5x6.00-127			
<b>BRAKES</b>					
Service	Type	Drum Brakes with Dual Circuit Hydraulic Control			
		Hydraulic Pressure Assistance and Anti-Lock Brake System (ABS) with Electronic Brake Force Distribution (EBD)			
Parking Brake Type		Transmission Mounted, Mechanical Operated Internal Expanding			
Auxiliary		Exhaust Brake			
<b>STEERING</b>					
Steering System		Power Assist, Recirculating Ball Type			
Min. Turning Radius	m	7.2	6.4		7.1
<b>ELECTRICAL</b>					
Battery		80D26L x 2			
Alternator		24V-90A			
<b>OTHER SAFETY</b>					
<b>Safety</b>		Supplemental Restraint System (SRS) with Pre-Tensioner Seatbelt			
		Anti-Slip Regulator (ASR) with On/Off Function			
		Cab Tilt Warning			
<b>Security</b>		Central Locking with Remote Keyless Entry & Immobiliser			
<b>DIMENSION</b>					
Overall Length	mm	6,635	5,985		6,635
Overall Width	mm		2,115		
Overall Height	mm	2,272	2,244		2,254
Wheelbase	mm	3,815	3,365		3,815
Front Overhang	mm		1,110		
Rear Overhang	mm	1,710	1,510		1,710
Front Tread	mm		1,680		
Rear Tread	mm		1,650		
Cab to Axle Center	mm	3,242	2,792		3,242

**ISUZU**

ISUZU MALAYSIA SDN BHD 200401026438 (664846-H)

501D, LEVEL 5, TOWER D, UPTOWN 5, NO.5, JALAN SS21/39, DAMANSARA UPTOWN, 47400 PETALING JAYA, SELANGOR DARUL EHSAN.

GENERAL LINE: 03-7723 9777 FAX: 03-7723 9779

HOTLINE: 1-300-88-1133 www.isuzu.net.my



IsuzuTrucksMalaysia



IsuzuTrucksMalaysia



www.isuzu.net.my

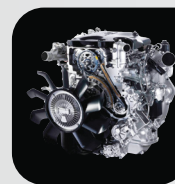
ISUZU SERVICE CENTRE SDN BHD 201601034731 (1205672-X)

LOT 730, JALAN SG. RASAU, SECTION 16, 40200 SHAH ALAM, SELANGOR DARUL EHSAN.

PHONE: 03-5513 0518

FAX: 03-5512 7550

# TESTED AND PROVEN POWERTRAIN



## NPR PRO

4JJ1-TCC

Displacement: 2,999cc

Max. Output (Gross): 91kW (125ps) @ 2,600rpm

Max. Torque: 354Nm @ 1,500rpm

**125PS**  
Max Power

**354Nm**  
Flat Torque



## NPR 155 / NQR 155

4HK1-TCN

Displacement: 5,193cc

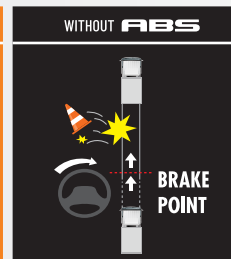
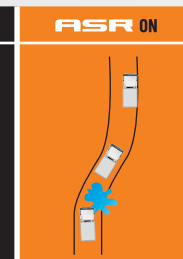
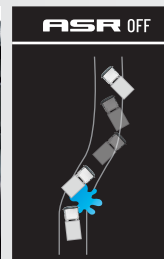
Max. Output (Gross): 114kW (155ps) @ 2,600rpm

Max. Torque: 419Nm @ 1,600rpm

**155PS**  
Max Power

**419Nm**  
Flat Torque

# CLASS-LEADING SAFETY AND LONG TERM COST SAVINGS



ASR traction control helps prevent wheelspins and improves vehicle stability when driving on slippery roads.

EBD is a function that uses the ABS to distribute braking force between the front and rear wheels to compensate for changes in the load conditions or any shift of load due to acceleration/deceleration, thus preventing premature locking of the rear wheels.

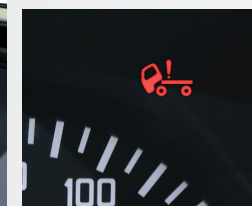


\*SRS airbag system and seat belt with pretensioner are activated in the event of a frontal collision, mitigating impact to the head and chest.

\*Applicable for driver only.



Brand New Feature - USB Port



Cabin Tilt Warning & Buzzer for driver safety warning



LED Headlight to provide better visibility

Dealer's information

**ISUZU**  
GENUINE PARTS

**ISUZU**  
BEST VALUE PARTS