

ISUZU

FORWARD



4 x 2 RIGID
GVW 19,000kg

FVR
240

FVR
300

EURO 3

*Applicable to FVR34UU-ST2

B20
— DIESEL —
COMPATIBLE

ABS

FREE
SERVICE CAMPAIGN
UP TO 100,000km*
*Terms and Conditions apply.
ISUZU

3
YEARS WARRANTY
OR
200,000 km
WHICHEVER COMES FIRST

ISUZU
DOCTOR
MOBILE
24
HOUR ASSISTANCE

Reliable support with
round-the-clock
business operation.



1-800-88-8000

PERFORMANCE

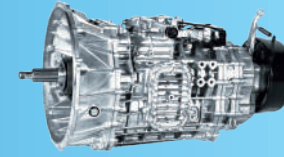


FVR 240 6HK1-TCN

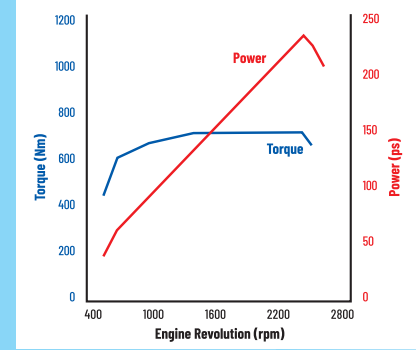
Displacement: **7,790cc**
 Max. Output (Gross): **240ps @ 2,400rpm**
 Max. Torque: **706Nm (72kgm) @ 1,450rpm**

240PS
Max Power

706Nm
Max Torque



MZW6P /
6-Speed Manual Transmission.



FVR 300 6HK1-TCS

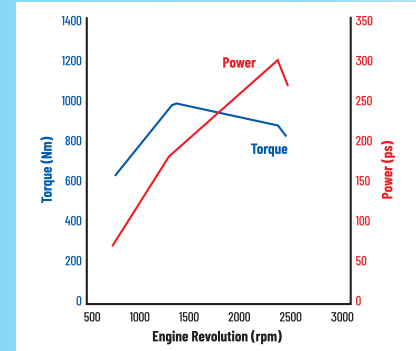
Displacement: **7,790cc**
 Max. Output (Gross): **300ps @ 2,400rpm**
 Max. Torque: **986Nm (100kgm) @ 1,450rpm**

300PS
Max Power

986Nm
Max Torque



Eaton ES1109 /
9-Speed Transmission.



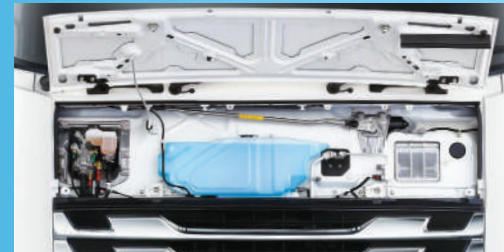
USEFUL FEATURES



Rivetless wider chassis for greater ease of body-building installations.



Bigger and durable aluminium alloy fuel tank with lockable cap (Applicable to FVR34UU-SD & FVR34UU-ST2).



Quick access panel. Designed for convenience, inspecting or replacing clutch fluid, wiper fluid and cabin air filter can be done quickly and safely.



Cabin tilting grip assist.



Bigger rear axle for higher load capacity (13 ton).



Electrical relay box positioned higher to avoid damages from flood.



Ergonomic instrument panel design with ample storage compartments.



More flat area for easy access to bed.



New digital meter with enhanced visibility on important information.



Air suspension driver's seat with resting bed and a full-trim cabin interior.

FOR SAFETY, COST-SAVINGS AND THE ENVIRONMENT

ISUZU



Technology

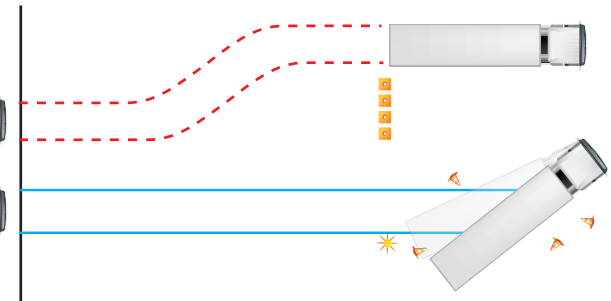
For truly global design, Isuzu creates products on the basis of strong conviction in its mission.

Commercial vehicles and diesel engines must meet common global standards of performance and quality. For example, state-of-the-art environmental performance brings real benefits only when taken beyond national borders and is not limited to Japan. For this reason, Isuzu has shifted its development focus from the domestic market to the idea of global design. Environmental regulations in individual countries are no longer a factor as Isuzu develops diesel engines meeting future regulations of all markets worldwide and creates unique global strategy vehicles in the heavy-, medium- and light-duty segments as well as pickup trucks. "Gaining the trust of people everywhere" is the development philosophy. This, in turn, is supported by the base concept of "SEE Technology," or the idea of pursuing technological excellence in the three critical areas of Safety, Economy and Environment.

With ABS



Without ABS



Anti-Lock Braking System (ABS) (Applicable to FVR34).



Save environment and cost with "S-Cam" auto adjuster full air brakes. B10 Diesel compatible.

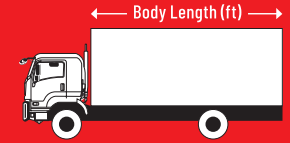
SPECIFICATIONS

FVR240

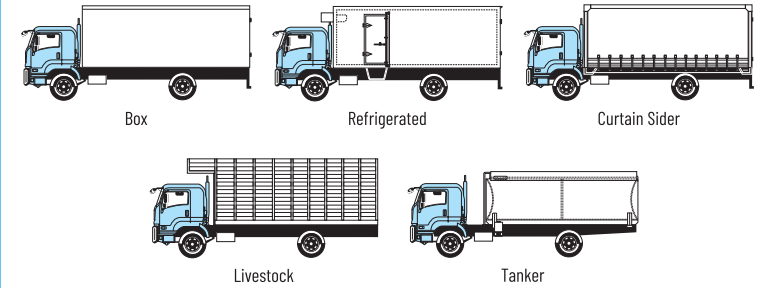
FVR300

MODEL CODE		FVR34UU-MD	FVR34UU-SD	FVR34UU-ST2
Drive Train		4 x 2		
ENGINE				
Model		6HK1-TCN		6HK1-TCS
Type		6 Cylinders In-line, 4 Cycle, Water-Cooled OHC, Turbo with Intercooler		
Displacement		cc		
Maximum Output (Gross)		kW (PS) @ rpm		7,790
Maximum Torque		Nm (kgfm) @ rpm		221(300) @ 2,400
Emission Level		Euro 2		Euro 3
Fuel System		Common Rail Direct Injection		
TRANSMISSION				
Model / No. of Speed		ISUZU MZWP6 / 6-Speed Manual		Eaton ES11109 / 9 Speed
Gear Ratio		C		
1st		6.615		12.638
2nd		4.095		8.807
3rd		2.358		6.550
4th		1.531		4.768
5th		1.000		3.548
6th		0.722		2.482
7th		-		1.846
8th		-		1.344
Reverse		6.615		1.000
Final		6.143		13.210
Final		6.143		4.556
WEIGHT & CAPACITIES				
Gross Vehicle Weight		kg		
Fuel Tank Capacity		l		19,000
		200		400
AXLE				
Front		Type		
Front Axle Capacity (Design)		kg		
Rear		Type		
Rear Axle Capacity (Design)		kg		
		Reverse Elliot, I-Beam		7,500
		Banjo, Full Floating		13,000
SUSPENSION SYSTEM				
Suspension		Front		
		Rear		
		Semi Elliptical Alloy Steel Leaf Springs, Hydraulic Double Acting Telescopic Shock Absorber		
		Semi Elliptical Alloy Steel Leaf Springs		
TYRES & WHEELS				
Tyres		295 / 80R22.5		
Wheels		22.5 x 8.25 (ISO 10 Studs)		
BRAKES				
Service		Full Air with Anti Lock Braking System (ABS), Auto Adjuster		
Parking Brake Type		Spring Acting, Rear Wheel Parking		
Auxiliary		Exhaust Brake		
STEERING				
Steering System		Power assisted, Hydraulic Integral, Recirculating Ball, Energy absorbing, Tilt & Telescopic Column		
Min. Turning Radius		m		7.7
				9.9
ELECTRICAL				
Battery		12V x 2		
Alternator		24V-60A		
DIMENSION				
Overall Length		OAL mm		8,005
Overall Width		DAW mm		2,490
Overall Height		DAH mm		2,900
Wheelbase		WB mm		4,660
Front Overhang		FOH mm		1,255
Rear Overhang		ROH mm		2,090
Front Tread		AW mm		2,065
Rear Tread		CW mm		1,850

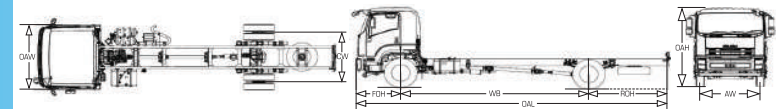
BODY APPLICATION



MODEL	ft	FVR240	FVR300	
		FVR34UU-MD	FVR34UU-SD	FVR34UU-ST2
Standard		20*	27*	27*



*Body length may vary according to rear body type application. Refer to ISUZU authorised drawing plan for actual body length at ISUZU dealers. Pictures shown are for illustration purposes only.



Isuzu Malaysia Sdn. Bhd. is engaged in an ongoing research and development programme, and reserves the right to change specifications, resulting in advancements or technical refinements, without prior notice. All product specifications are within normal manufacturing allowances and tolerances.

Dealer's information

ISUZU

ISUZU MALAYSIA SDN BHD 200401026438(664946-H)

501D, LEVEL 5, TOWER D, UPTOWN 5, NO.5, JALAN SS21/39,
DAMANSARA UPTOWN, 47400 PETALING JAYA, SELANGOR DARUL EHSAN.
GENERAL LINE: 03-7723 9777 FAX: 03-7723 9779
HOTLINE: 1-300-88-1133 www.isuzu.net.my

IsuzuTrucksMalaysia

ISUZU SERVICE CENTRE SDN BHD 201601034731(1205672-X)

LOT 730, JALAN SG. RASAU, SECTION 17,
40000 SHAH ALAM, SELANGOR DARUL EHSAN.
PHONE: 03-5513 0518
FAX: 03-5512 7550

ISUZU
GENUINE PARTS

ISUZU
BEST VALUE PARTS